

TECNOVIDEO

CCTV SYSTEMS AND ACCESSORIES

PTZ250 SERIES

STAINLESS STEEL PTZ CAMERA STATION

SAFE AREA

AISI316L STAINLESS STEEL CONSTRUCTION
FOR USE IN HIGHLY CORROSIVE ENVIRONMENTS
EASY INSTALLATION AND MAINTENANCE
WEATHERPROOF STANDARD IP66/IP67
SUITABLE FOR ANALOG AND IP CAMERAS
DAY/NIGHT AND IR THERMAL VERSIONS AVAILABLE



PTZ250 PTZ CAMERA STATION

TECHNICAL SPECIFICATIONS

GENERAL & MECHANICAL

Dimensions	See drawings next page
Operating Temperature	-20° +60°C (-4° +140° F)
Construction	AISI316L Stainless Steel
Finish	Electro-polished
Mounting	4x Ø11 on 195 PCD
Cable entries	2 M25x1,5 cable entry
Pan Angle	360° (continuous rotation) or 350° (+/-175°)
Pan Speed	0 – 36°/second
Pan Torque	80 Nm
Tilt Angle	180° (+/-90°)
Tilt Speed	0 – 18°/second
Tilt Torque	107 Nm
Rotation angle	Electronically adjustable
Backlash	<0,1°
Max preset accuracy	0,04°

Control protocol Pelco D (via RS485)

Weight (without cameras)

Model	Unit [kg]	Package [kg]
PTZ250	25	27
PTZ250IR	24	26
PTZ250D	37	40

ELECTRICAL

Supply voltage	24V~, 230V~ (+/-10%)
Power consumption	80W

Thermostatically controlled heater
T[°C] ON = 12 ± 4°C, T[°C] OFF = 20 ± 3°C

CERTIFICATIONS

Ingress Protection (EN 60529)	IP66/IP67
EMC	EN 61000-6-3:2007; EN 50130-4:1995 + A1:1998 + A2:2003
LVD	EN 60950-1:2006 + A11:2009
RoHS	2011/65/EU
WEEE	2012/19/EU

MODELS

PTZ250/24	For Day/Night cameras (usable Ø72 mm), integrated wiper, 360° (+/-180°) pan rotation
PTZ250-CR/24	For Day/Night cameras (usable Ø72 mm), integrated wiper, 360° continuous pan rotation
PTZ250IR/24	Germanium front window (usable Ø70 mm; thickness 3 mm; AR/DLC coating) for thermal imaging cameras, 360° (+/-180°) pan rotation
PTZ250IR-CR/24	Germanium front window (usable Ø70 mm; thickness 3 mm; AR/DLC coating) for thermal imaging cameras, 360° continuous pan rotation
PTZ250D/24	Dual housing: integrated wiper for Day/Night cameras (usable Ø72 mm); Germanium front window (usable Ø70 mm; thickness 3 mm; AR/DLC coating) for thermal imaging cameras, 360° (+/-180°) pan rotation
PTZ250D-CR/24	Dual housing: integrated wiper for Day/Night cameras (usable Ø75 mm); Germanium front window (usable Ø70 mm; thickness 3 mm; AR/DLC coating) for thermal imaging cameras, 360° continuous pan rotation

All the above PTZ camera stations are 24V~. Suffix /230 is used for models 230V~.

All the above PTZ camera stations include sunshield and heater, a built-in telemetry receiver, variable speed motors, fixed cable entry (2 M25x1,5) with base mount junction box.

MOUNTING ACCESSORIES

SSBK500	Wall mounting bracket
----------------	-----------------------

ACCESSORIES AND SPARE PARTS

MKPTZ250	Maintenance kit with O-Ring seals, screws, desiccant bags, for PTZ250 Series
-----------------	--

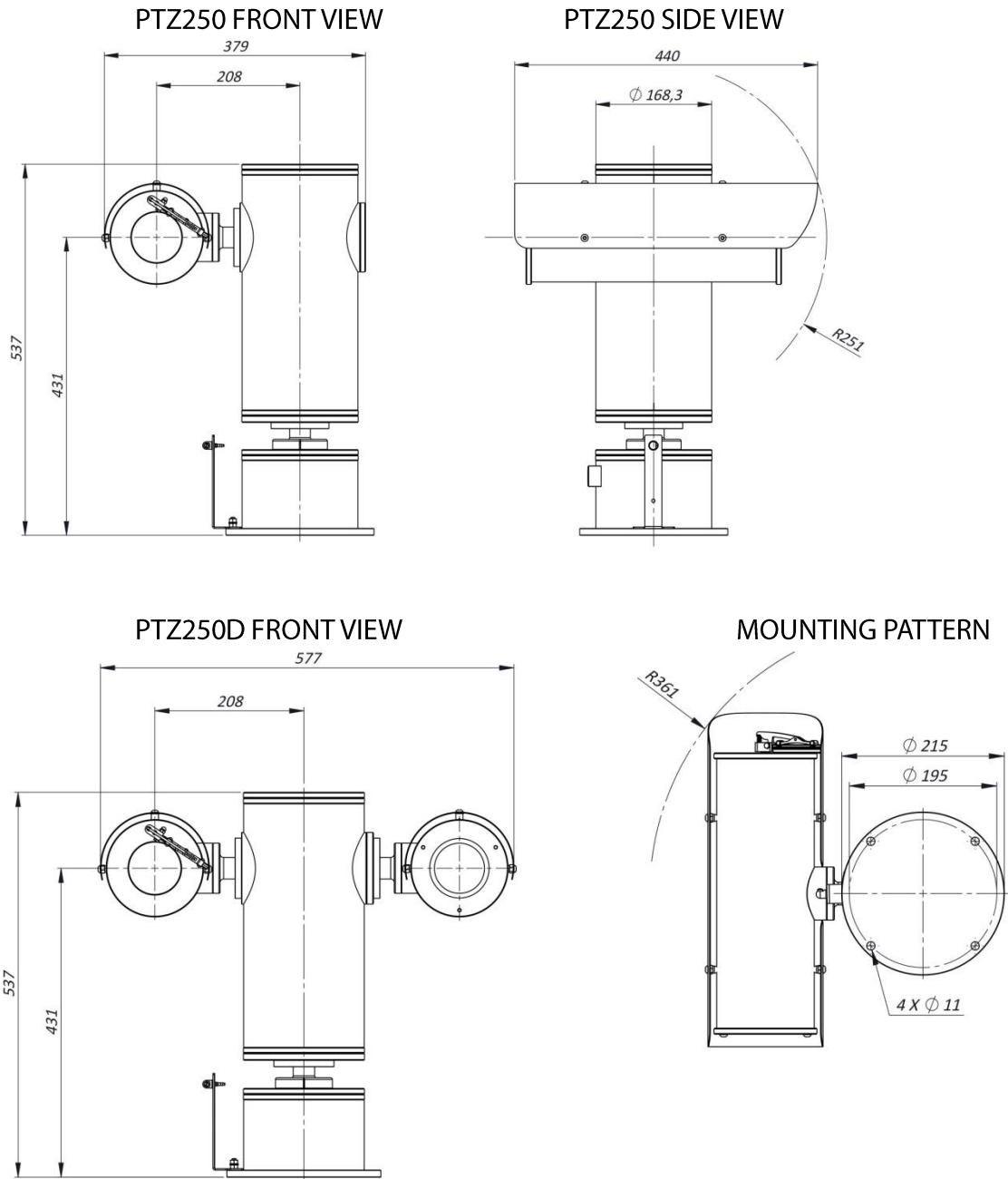
TELEMETRY RECEIVERS (RS485, PELCO D protocol)

RX250DC EVO	Telemetry controller for PTZ Series
--------------------	-------------------------------------

www.tecnovideoctv.com

Tecnovideo S.r.l. - Via San L. Murialdo, 8 36030 Villaverla (VI) ITALY - Tel. +39.0445.350444 Fax +39.0445.357259 - info@tecnovideoctv.com

DIMENSIONS



MAX INTERNAL AVAILABLE DIMENSIONS

Model	Max internal dimensions [mm]	Max usable internal diameter [mm]
PTZ250	80x80x200	86
PTZ250IR	80x80x200	96

Please contact us if bigger cameras/zoom lenses are needed.

The unit cannot be installed upside-down nor horizontally