

# TECNOVIDEO

CCTV SYSTEMS AND ACCESSORIES

# EX129 SERIES

STAINLESS STEEL CAMERA STATION



HAZARDOUS AREA

AISI316L STAINLESS STEEL CONSTRUCTION  
 FOR USE IN HIGHLY CORROSIVE ENVIRONMENTS  
 INTEGRATED WIPER VERSION AVAILABLE  
 WEATHERPROOF STANDARD IP66/IP67  
 AVAILABLE FOR CUSTOMER SPECIFIED EQUIPMENT  
 SUITABLE FOR ANALOG AND IP CAMERAS  
 DAY/NIGHT AND IR THERMAL VERSIONS AVAILABLE  
 SUITABLE FOR DIRECT OPTICAL FIBER CONNECTION



EX129WW CAMERA STATION WITH WIPER

## TECHNICAL SPECIFICATIONS

### GENERAL & MECHANICAL

<b>Dimensions</b>	See drawings next page
<b>Operating Temperature</b>	-20° +60°C (-4° +140° F)
<b>Construction</b>	AISI316L Stainless Steel
<b>Finish</b>	Electro-polished
<b>Mounting</b>	4x M5 on 101,6 PCD 4x M6 on 90x130
<b>Cable entries</b>	1 M20x1,5 cable entry 1 M25x1,5 cable entry available upon request

Weight Model	Unit [kg]	Package [kg]
EX129/EX129IR/EX129IRS	9	10
EX129-M/EX129IR-M/EX129IRS-M	11	12
EX129-L/EX129IR-L/EX129IRS-L	12	13
EX129WW	10	11
EX129WW-M	12	13
EX129WW-L	13	14

### ELECTRICAL

**Thermostatically controlled heater**  
 T[°C] ON = 12 ± 4°C, T[°C] OFF = 20 ± 3°C  
**Available voltages** 24, 230 V~ (+/-10%)

**Wiper**  
**Available voltages** 24, 230 V~ (+/-10%)

**Max power consumption** 25W

### CERTIFICATIONS

<b>Ingress Protection(EN 60529) Rating</b>	IP66/IP67 ⊕ II 2 G Ex db op pr IIC Gb T6 T <sub>amb</sub> -40°C to +60°C ⊕ II 2 D Ex tb IIIC T85°C Db IP66/IP67
<b>ATEX Standards</b>	EN 60079-0:2012; EN 60079-1:2014; EN 60079-28:2015; EN 60079-31:2014
<b>IECEx Standards</b>	IEC 60079-0:2011; IEC 60079-1:2014-06; IEC 60079-28:2015; IEC 60079-31:2013
<b>EMC</b>	EN 61000-6-3:2007; EN 50130-4:1995 + A1:1998 + A2:2003
<b>LVD</b>	EN 60950-1:2006 + A11:2009
<b>RoHS</b>	2011/65/EU
<b>WEEE</b>	2012/19/EU

### MODELS

EX129/24 <sup>1</sup>	Housing (L=250 mm)
EX129-M/24 <sup>1</sup>	Housing (L=375 mm)
EX129-L/24 <sup>1</sup>	Housing (L=500 mm)
EX129WW/24 <sup>1</sup>	Housing (L=250 mm) + integrated wiper
EX129WW-M/24 <sup>1</sup>	Housing (L=375 mm) + integrated wiper
EX129WW-L/24 <sup>1</sup>	Housing (L=500 mm) + integrated wiper
EX129IR/24 <sup>2</sup>	Housing (L=250 mm) + protective guard
EX129IR-M/24 <sup>2</sup>	Housing (L=375 mm) + protective guard
EX129IR-L/24 <sup>2</sup>	Housing (L=500 mm) + protective guard
EX129IRSW/24 <sup>2</sup>	Housing (L=250 mm) without protective guard
EX129IRSW-M/24 <sup>2</sup>	Housing (L=375 mm) without protective guard
EX129IRSW-L/24 <sup>2</sup>	Housing (L=500 mm) without protective guard
EX129IRS/24 <sup>3</sup>	Housing (L=250 mm) + protective guard
EX129IRS-M/24 <sup>3</sup>	Housing (L=375 mm) + protective guard
EX129IRS-L/24 <sup>3</sup>	Housing (L=500 mm) + protective guard

<sup>1</sup> Usable front window diameter: 75 mm, thickness: 12 mm  
<sup>2</sup> Usable front window diameter: 50 mm, thickness: 10 mm. Germanium, AR/DLC coating  
<sup>3</sup> Usable front window diameter: 50 mm, thickness: 6mm. Sapphire  
 All the above models are 24V~. Suffix /230 is used for 230V~ models.  
 All the above models include sunshield and heater.

### PRE-ASSEMBLED CONDUIT TAILS

EXCT20AN	3 metres 20 mm conduit tail analog + 2 M20 brass glands
EXCT20AN1m	1 metre additional EXCT20AN conduit tail
EXCT20IP	3 metres 20 mm conduit tail ethernet + 2 M20 brass glands
EXCT20IP1m	1 metre additional EXCT20IP conduit tail
EXCT25AN	3 metres 25 mm conduit tail analog + 2 M25 brass glands
EXCT25AN1m	1 metre additional EXCT25AN conduit tail
EXCT25IP	3 metres 25 mm conduit tail ethernet + 2 M25 brass glands
EXCT25IP1m	1 metre additional EXCT25IP conduit tail

### MOUNTING ACCESSORIES

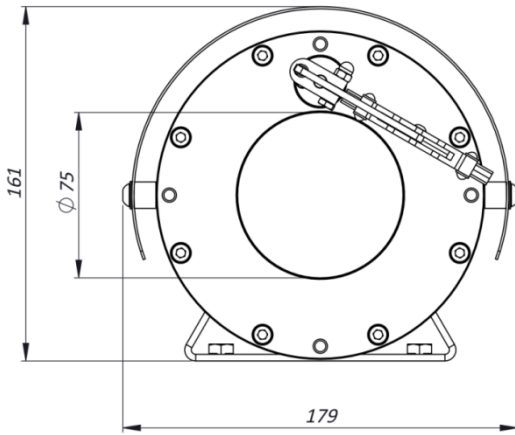
EXSSBK129	Wall mounting bracket with swivel joint
EXSSPM129	Pole mount adapter
EXSSPTM129	Pole top mount adapter

### ACCESSORIES AND SPARE PARTS

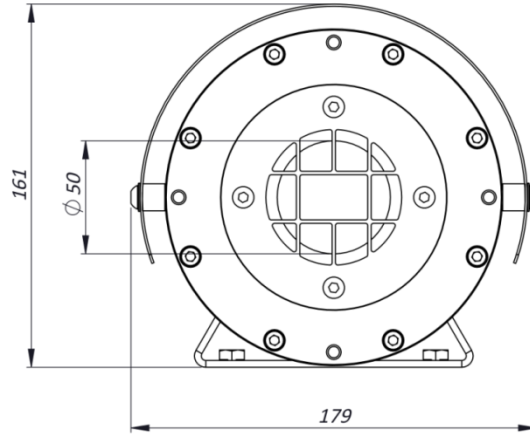
RX24IO	Telemetry controller for fixed wash/wipe housings
EXWB129	Wiper blade (complete assembly)
EXWBK129	Wiper blade (only spare part: rubber blade and support)

## DIMENSIONS

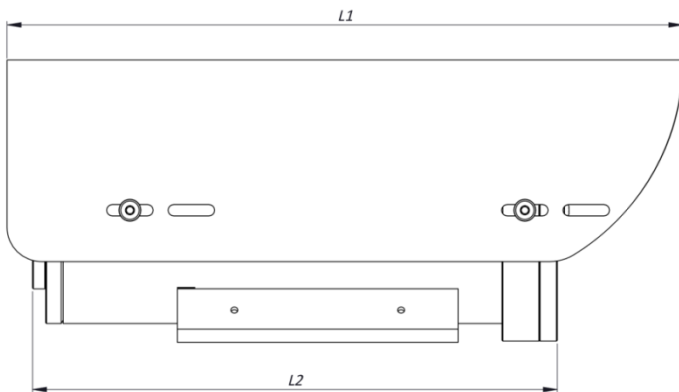
EX129WW FRONT VIEW



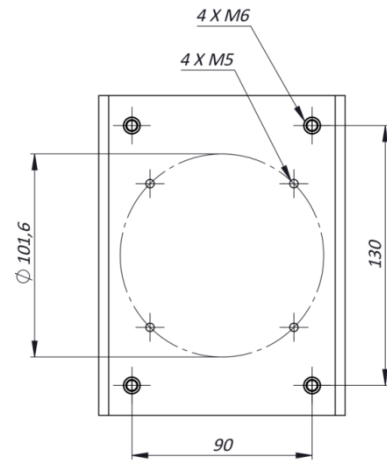
EX129IR FRONT VIEW



SIDE VIEW



MOUNTING PATTERN



### MAX EXTERNAL LENGTH

Model	L1 [mm]	L2 [mm]
EX129/EX129IR/EX129IRS/EX129WW	385	299
EX129-M/EX129IR-M/EX129IRS-M/EX129WW-M	510	424
EX129-L/EX129IR-L/EX129IRS-L/EX129WW-L	630	544

### MAX INTERNAL USABLE AREA

Model	Max internal dimensions [mm]	Max usable internal diameter [mm]
EX129/EX129IR/EX129IRS	80x80x160	95
EX129-M/EX129IR-M/EX129IRS-M	80x80x285	95
EX129-L/EX129IR-L/EX129IRS-L	80x80x405	95
EX129WW	80x80x145	85
EX129WW-M	80x80x265	85
EX129WW-L	80x80x390	85

Please contact us if bigger cameras/zoom lenses are needed.