

TECNOVIDEO

CCTV SYSTEMS AND ACCESSORIES

204 SERIES

STAINLESS STEEL CAMERA STATION

SAFE AREA

AISI316L STAINLESS STEEL CONSTRUCTION
FOR USE IN HIGHLY CORROSIVE ENVIRONMENTS
EASY INSTALLATION AND MAINTENANCE
INTEGRATED WIPER VERSION AVAILABLE
WEATHERPROOF STANDARD IP66/IP67
SUITABLE FOR ANALOG AND IP CAMERAS
DAY/NIGHT AND IR THERMAL VERSIONS AVAILABLE
REFINED AND MODERN DESIGN



204WW CAMERA HOUSING WITH SUNSHIELD, HEATER AND WIPER

TECHNICAL SPECIFICATIONS

GENERAL & MECHANICAL

Dimensions	See drawings next page
Operating Temperature	-20° +60°C (-4° +140° F)
Construction	AISI316L Stainless Steel
Finish	Electro-polished
Mounting	See drawings next page
Cable entries	4 M20x1,5 nickel plated brass cable glands (included) Standard cable diameter 5-10mm

Weight	Unit [kg]	Package [kg]
Model		
204SH/204SHIR	13	15
204WW/204WWIR	15	17

ELECTRICAL

Thermostatically controlled heater	
T[°C] ON = 12 ± 4°C, T[°C] OFF = 20 ± 3°C	
Available voltages	24VUC (24V~/VDC), 230V~ (+/-10%)
Power consumption	15W

Wiper	
Available voltages	24VDC (+/-10%)
Power consumption	4W

CERTIFICATIONS

Ingress Protection(EN 60529)	IP66/IP67
EMC	EN 61000-6-3:2007; EN 50130-4:1995 + A1:1998 + A2:2003
LVD	EN 60950-1:2006 + A11:2009
RoHS	2011/65/EU
WEEE	2012/19/EU

MODELS

204SH/24¹	Housing + sunshield + heater. Supply voltage: 24VUC
204WW/24D²	Housing + sunshield + heater + integrated wiper. 24VDC
204SHIR70/24³	Housing + sunshield + heater. Supply voltage: 24VUC
204SHIR70/230³	Housing + sunshield + heater. Supply voltage: 230V~
204WWIR70/24D³	Housing + sunshield + heater + integrated wiper. 24VDC
204SHIR110/24⁴	Housing + sunshield + heater. Supply voltage: 24VUC
204SHIR110/230⁴	Housing + sunshield + heater. Supply voltage: 230V~
204WWIR110/24D⁴	Housing + sunshield + heater + integrated wiper. 24VDC
204SHIR145/24⁵	Housing + sunshield + heater. Supply voltage: 24VUC
204SHIR145/230⁵	Housing + sunshield + heater. Supply voltage: 230V~

- ¹ Usable front window diameter: 145 mm, thickness: 5 mm
- ² Usable front window diameter: 120 mm, thickness: 12 mm. Vandal resistant glass
- ³ Usable front window diameter: 70 mm, thickness: 3 mm. Germanium, AR/DLC coating
- ⁴ Usable front window diameter: 110 mm, thickness: 3 mm. Germanium, AR/DLC coating
- ⁵ Usable front window diameter: 145 mm, thickness: 3 mm. Germanium, AR/DLC coating

MOUNTING ACCESSORIES

SSBK204	Wall mounting bracket with swivel joint for 204 Series
SSPM204	Pole mount adapter for SSBK204

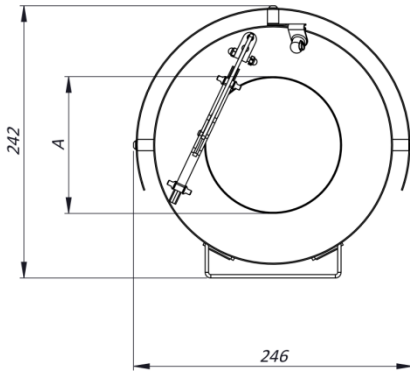
ACCESSORIES AND SPARE PARTS

WB204	Wiper blade (complete assembly)
WBK204	Wiper blade (only spare part: rubber blade and support)
HK204	15W heater kit (24VUC)
MK204	Maintenance kit with O-ring seals, screws seals, screws, hex keys, desiccant bags

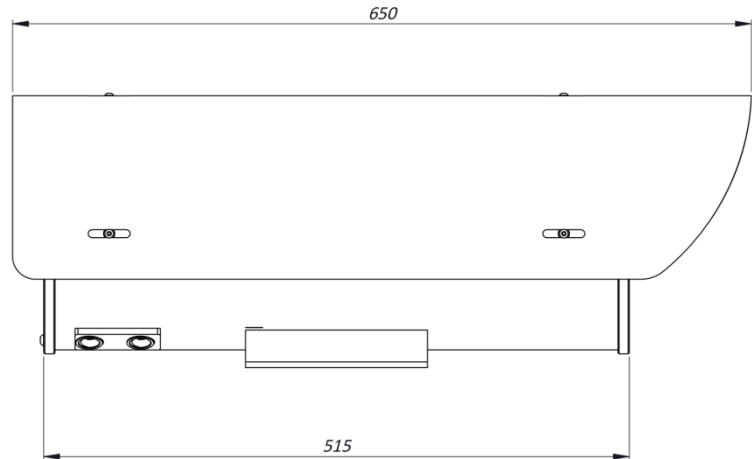
STAINLESS STEEL CAMERA STATION

DIMENSIONS

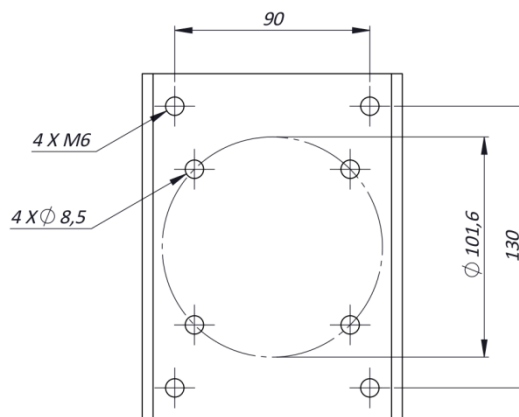
FRONT VIEW



SIDE VIEW



MOUNTING PATTERN



FOR "A" VALUES CHECK "MODELS" SECTION

MAX INTERNAL USABLE AREA

Model	Max internal dimensions [mm]	Max usable internal diameter [mm]
204SH/204HIR	130x130x348	166
204WW/204WWIR	130x130x348	164