



UMRR |

Universal Traffic Management Radar

INTERSECTIONS

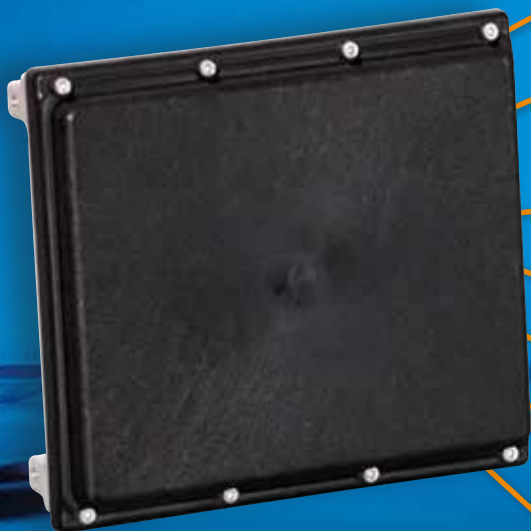
- Stop Bar +
- Advance +
- Stop + Advance
Stop Bar and Advance Detection
with one Single Sensor

ARTERIALS

- Forward +
Traffic Counting and Classification

ENFORCEMENT

- Red Light Enforcement
- Speed Enforcement
Certified



MULTI-LANE

Lane Specific, Up To 8 Lanes, Up To 450m

REPLACES LOOPS, OUTPERFORMS VIDEO DETECTORS

DETECTS MOVING AND STOPPED TRAFFIC

RELAYS, SDLC, RS485, ETHERNET

WORKS UNDER ALL CONDITIONS

FIELD PROVEN

In Service Since 2009, Many Thousands Deployed Worldwide

MAINTENANCE FREE

UMRR-0A |

- Multi-Lane, Multi-Object 3D Tracking Radar.
- For Intersection Control, Traffic Counting and Enforcement Applications.

	TYPE 29	TYPE 30	TYPE 32
APPLICATIONS	Stop + Advance Forward + Enforcement	Stop Bar + Forward + Enforcement	Advance +
TECHNOLOGY	3D Object Tracking		
PERFORMANCE			
Passenger Car Detection Range	160m (525ft) / China: 105m	105m (344ft) / China: 75m	240m (787ft) / China: 170m
Bicycle Detection Range	50m (164ft) / China: 35m	46m (151ft) / China: 32m	90m (295ft) / China: 65m
Optional Vehicle Detection Range	180m (591ft)	-	305m (1000ft)
Azimuth Field of View	-18...+18deg	-35...+35deg	-12...+12deg
Minimum Detection Range	1.5m (5ft)		
Range Accuracy	typ. < +/- 2.5% or < +/- 0.25m (bigger of)		
Speed Accuracy	typ. < +/- 0.28m/sec or +/- 1% (bigger of)		
Speed Interval	-68.3m/sec to -0.1m/sec and 0.1m/sec to 68.3m/sec (opt. +/-88.8m/sec)		
Refresh Time	50 msec		
Simultaneously Tracked Objects	Up to 64		
MECHANICAL			
Weight	330g (0.73lbs)	295g (0.65lbs)	1276g (2.81lbs)
Dimensions	110 x 99 x 31mm	95 x 85 x 31mm	213 x 155 x 31mm
Enclosure	Rugged, Watertight Casing Conforming to IP67		
ENVIRONMENTAL			
Operation Temperature	-40 to +85deg C (-40 to +185deg F)		
Shock; Vibration	100g rms; 14g rms		
GENERAL			
Frequency Band; EIRP	24.0 to 24.25GHz (K Band); 20dBm		
Mounting Height	1.5 to 10m (4.5 to 18ft)		
Power Supply	7 to 32 VDC; 3.7 Watts		
Connector	8 Pin plug Binder Series 712		
Communication Interface	RS485, CAN Bus, Relay Contacts		
Compatible Interface Modules	Ethernet, NEMA Cabinet Cards (Relays, SDLC), HSDPA/UMTS/GPRS WIFI Modems		

All Product specifications and data on this document are subject to change without notice. Smartmicro disclaims any and all liability.

UMRR-0C |

- Wide Beam, Long Range, Multi-Lane, Multi-Object 3D Tracking Radar with High Resolution.
- For Intersection Control, Traffic Counting and Enforcement Applications with Dense Traffic.
- Vehicle Length Measurement and Classification.
- Ethernet Interface, Real Time Clock, Flash Memory for Data Storage.

NEW!

	TYPE 40	TYPE 42 <small>replaces Type 39</small>
APPLICATIONS	Stop + Advance 2DHD Forward + 2DHD Enforcement 2DHD	Stop + Advance 3DHD Forward + 3DHD Enforcement 3DHD
TECHNOLOGY	3D Object Tracking with 2DHD Resolution	3D Object Tracking with 3DHD Resolution
PERFORMANCE		
Passenger Car Detection Range	350m (1148ft) / China: 230m	170m (558ft) / On request: 250m (820ft)
Truck Detection Range	450m (1476ft) / China: 350m	280m (919ft) / On request: 300m (984ft)
Maximum Range	450m (1476ft)	330m (1082ft)
Azimuth Field of View	-18...+18deg	-50...+50deg
Minimum Detection Range	1.5m (5ft)	
Range Accuracy	typ. < +/- 1.5% or < +/- 0.25m (bigger of)	
Speed Accuracy	typ. < +/- 0.28m/sec or +/- 1% (bigger of)	
Speed Interval	-68.3m/sec to -0.1m/sec and 0.1m/sec to 68.3m/sec (opt. +/-88.8m/sec)	
Refresh Time	79msec	≤79 / ≤40msec
Simultaneously Tracked Objects	Up to 256 (126 Reported)	
MECHANICAL		
Weight	1230g (7.71lbs)	
Dimensions	212.6 x 154.6 x 38.15mm	
Enclosure	Rugged, Watertight Casing Conforming to IP67	
ENVIRONMENTAL		
Operation Temperature	-40 to +74deg C (-40 to +165deg F)	
Shock; Vibration	100g rms; 14g rms	
GENERAL		
Frequency Band; EIRP	24.0 to 24.25GHz (K Band); 20dBm (12.7dBm in certain regions)	
Mounting Height	1.5 to 10m (4.5 to 33ft)	
Power Supply	13 to 32 VDC; 14 Watts	13 to 32 VDC; 12 Watts
Connector	12 Pin plug Hirose LF10WBRB 12PD (Bayonet)	
Communication Interface	Ethernet, RS485, CAN Bus	
Compatible Interface Modules	NEMA Cabinet Cards (Relays, SDLC), HSDPA/UMTS/GPRS WIFI Modems	
Other Features	Real Time Clock, Flash Memory for >2 Months Storage	